



UROLOGICAL CONSULTANTS, P.A.
Comprehensive Urological Care for Montgomery County

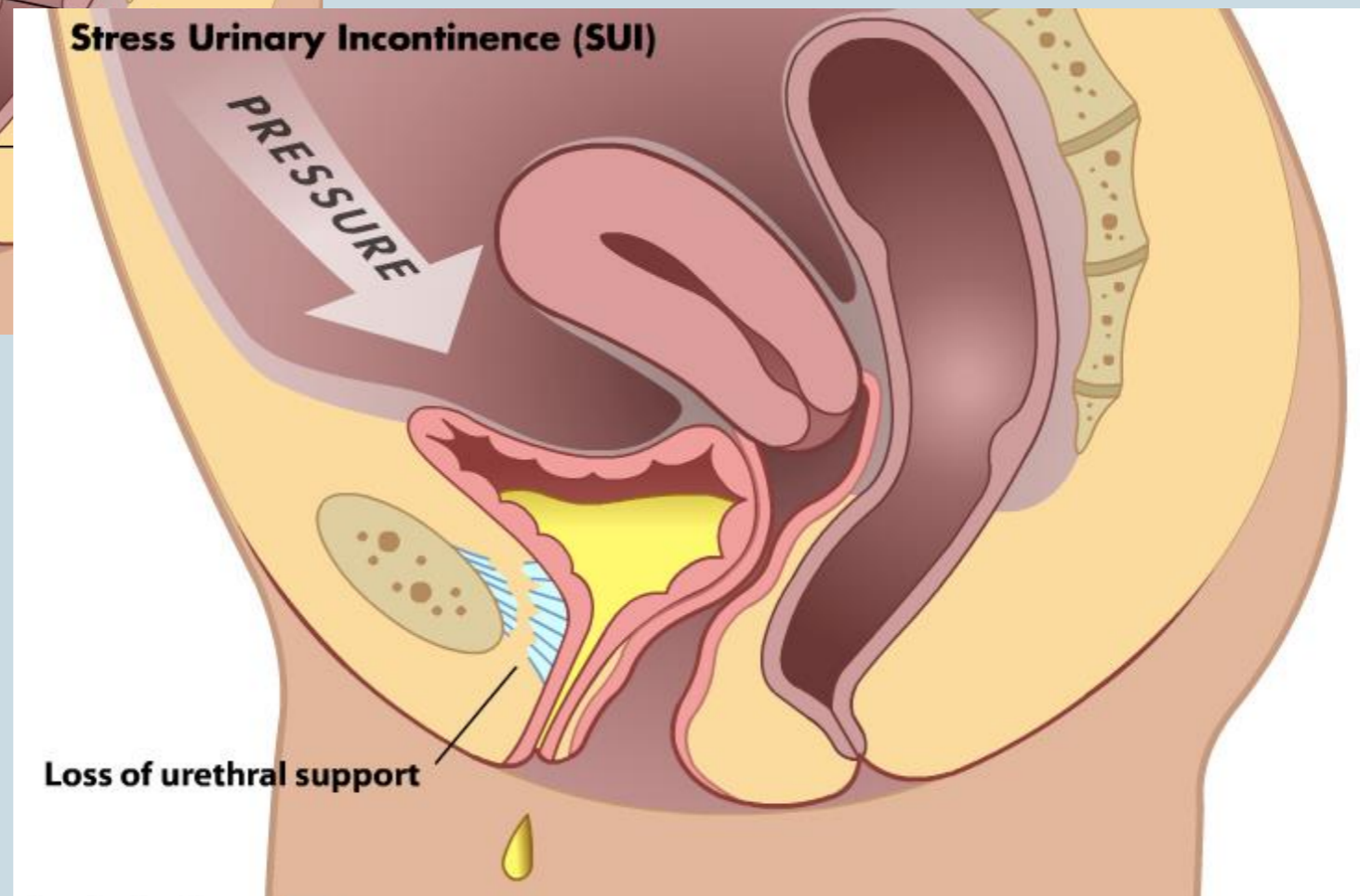
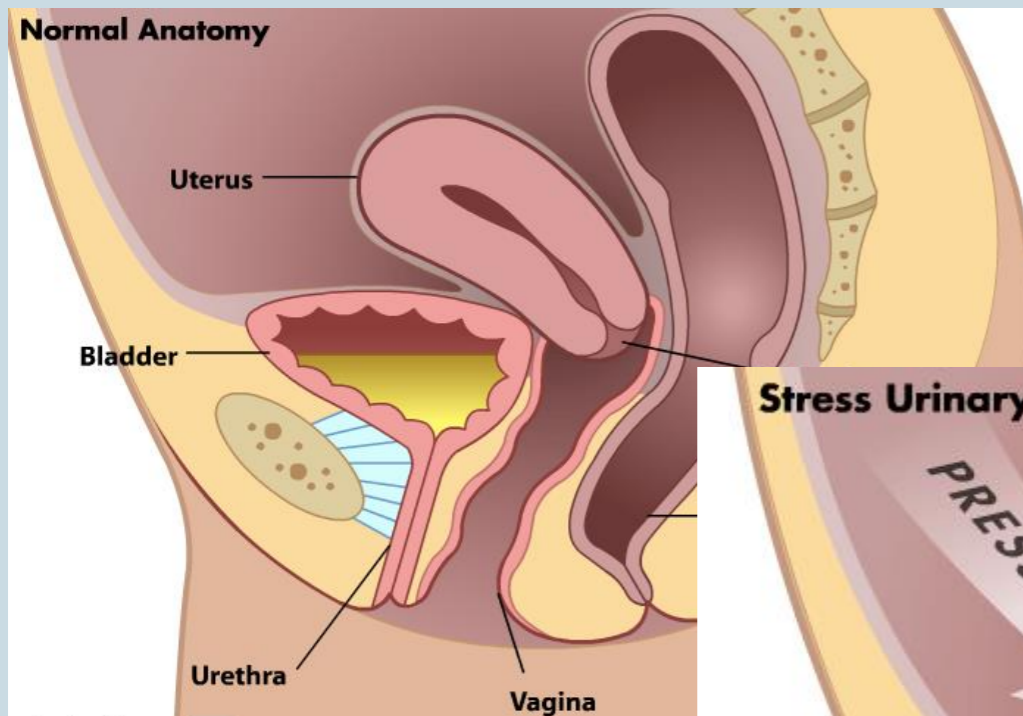
**Big Problem, Miniature Solution:
Mini-Sling Procedure
for Female Stress Urinary Incontinence**

Kathleen Sterling, MD
November 19, 2014



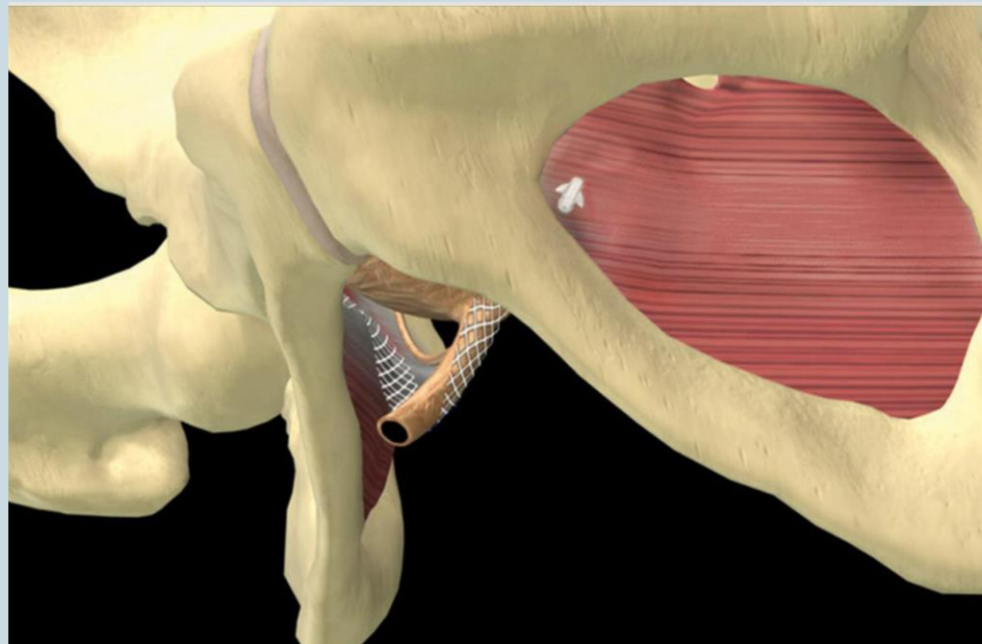
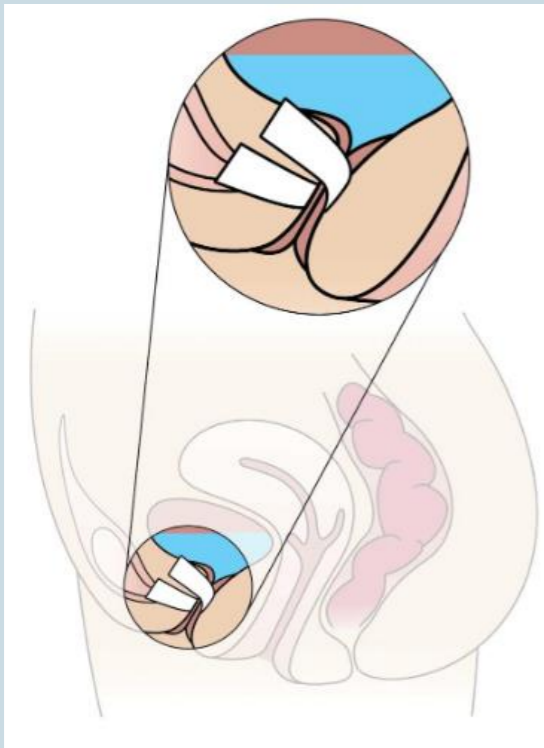


Stress Urinary Incontinence



Mini-Sling Procedure

- **Single-incision approach**
- **Outpatient procedure**
- **Expedited recovery**





3 Truths About Mesh

#1 Polypropylene material is a safe and effective surgical implant.

#2 The 2011 FDA Safety Communication on urogynecologic surgical mesh did NOT apply to mesh for urinary incontinence procedures.

#3 The mesh mid-urethral sling is the most extensively studied anti-incontinence procedure in history.





Mini-Sling Data (comparison to standard mid-urethral sling)

- **Similar success rate**
 - **86% objective cure rate**
 - **83% patient-reported cure rate**
- **Lower post-operative pain scores, less groin pain**
- **Shorter operative time**
- **Early return to normal activities and work**





UROLOGICAL CONSULTANTS, P.A.
Comprehensive Urological Care for Montgomery County

Thank you!

6410 Rockledge Dr
Suite 503
Bethesda, MD 20817
301-530-1700

20528 Boland Farm Rd
Suite 202
Germantown, MD 20876
301-530-1700

