

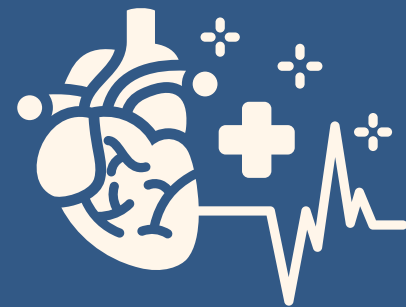


# PROJECT ACCESS

## EXPANDING SPECIALTY CARE FOR UNINSURED PATIENTS

### What is Project Access?

Project Access (PA) is a specialty care coordination program operated by the Primary Care Coalition. We connect uninsured residents referred by community health centers to specialty care providers who partner with us to deliver timely, coordinated care.



### Why join Project Access?

With changes to federal funding expected to leave many without Medicaid coverage, PA offers a way to help. Montgomery County's strong healthcare safety net relies on specialists willing to provide care to uninsured patients.

- ✓ Join a trusted specialty network.
- ✓ Flexible participation options – Pro bono or Medicare/Medicaid reimbursement rate
- ✓ Centralized coordination for scheduling
- ✓ Reduced administrative burden (we coordinate referrals and scheduling)



“ Project Access makes it easy for our practice to care for uninsured patients without adding administrative burden.

- Specialty Care Provider

“ Through Project Access, we are able to provide critical specialty care to patients who would otherwise go without treatment.

- Specialty Care Provider

## Annual Program Impact

> 85%

Practices in the PA network are satisfied with participation

3000+

Specialty Appointments Coordinated

165

Surgical Procedures Supported

## Participation Model

### Option 1: Pro Bono Participation

- Services provided at no cost
- Flexible volume
- High community impact

### Option 2: 100% Medicare or Medicaid Rate

- Reimbursement at applicable rates
- Sustainable participation model

## Currently recruiting specialty providers

- Cardiology
- Neurology
- Urology
- Gastroenterology
- ENT
- Nephrology
- Dermatology
- Occupational Therapy

## How to Get Started?

- 1 Participation conversation
- 2 Choose your preferred participation model
- 3 Sign contract
- 4 Submit credentialing documentation

## Interested in joining Project Access?

Contact **Tefo Linchwe** at  
[tefo\\_linchwe@primarycarecoalition.org](mailto:tefo_linchwe@primarycarecoalition.org) to  
schedule a brief introductory conversation